

# SPARE PARTS SECTION

The following section covers the spare parts diagrams and lists that were current at the time this manual was originally printed. Due to continuous improvements of the machine, changes may be made at any time without notification.

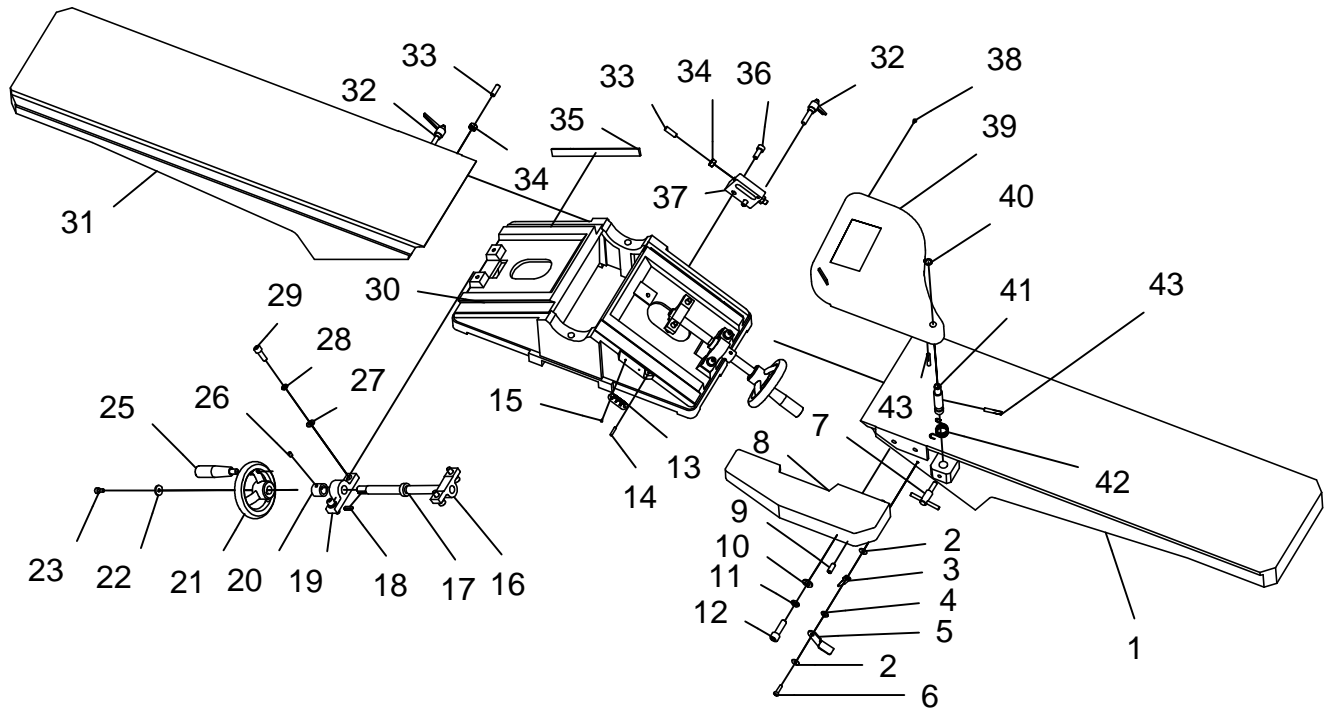
## HOW TO ORDER SPARE PARTS

1. Have your machines **model number, serial number & date of manufacture** on hand, these can be found on the specification plate mounted on the machine
2. A scanned copy of your parts list/diagram with required spare part/s identified
3. Go to [www.machineryhouse.com.au/contactus](http://www.machineryhouse.com.au/contactus) and fill out the enquiry form attaching a copy of scanned parts list.

## CONTENTS

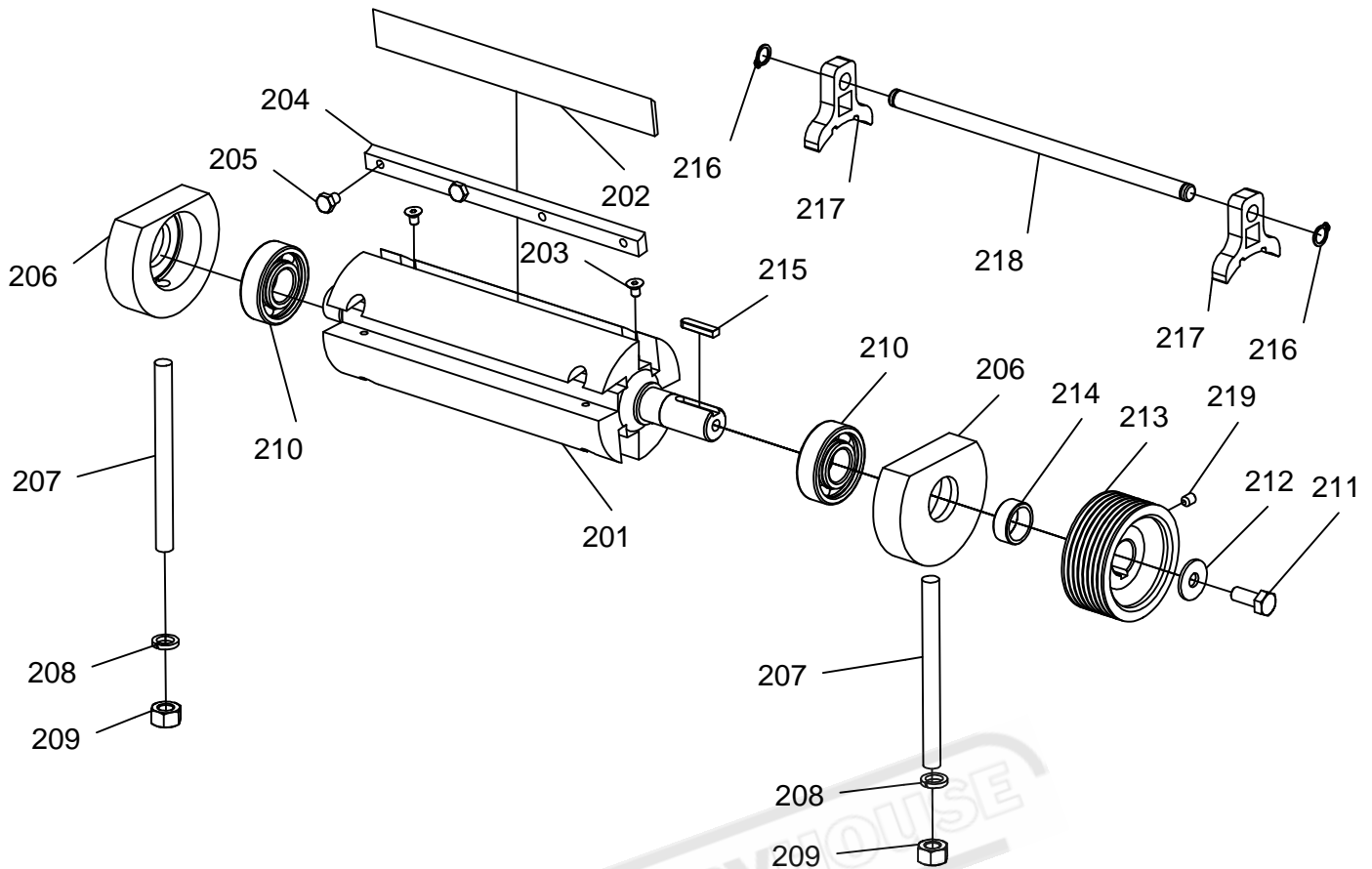
Table-----	21
Cutter Head -----	22
Fence-----	23
Base-----	24
Risk Assesment-----	25

## Table



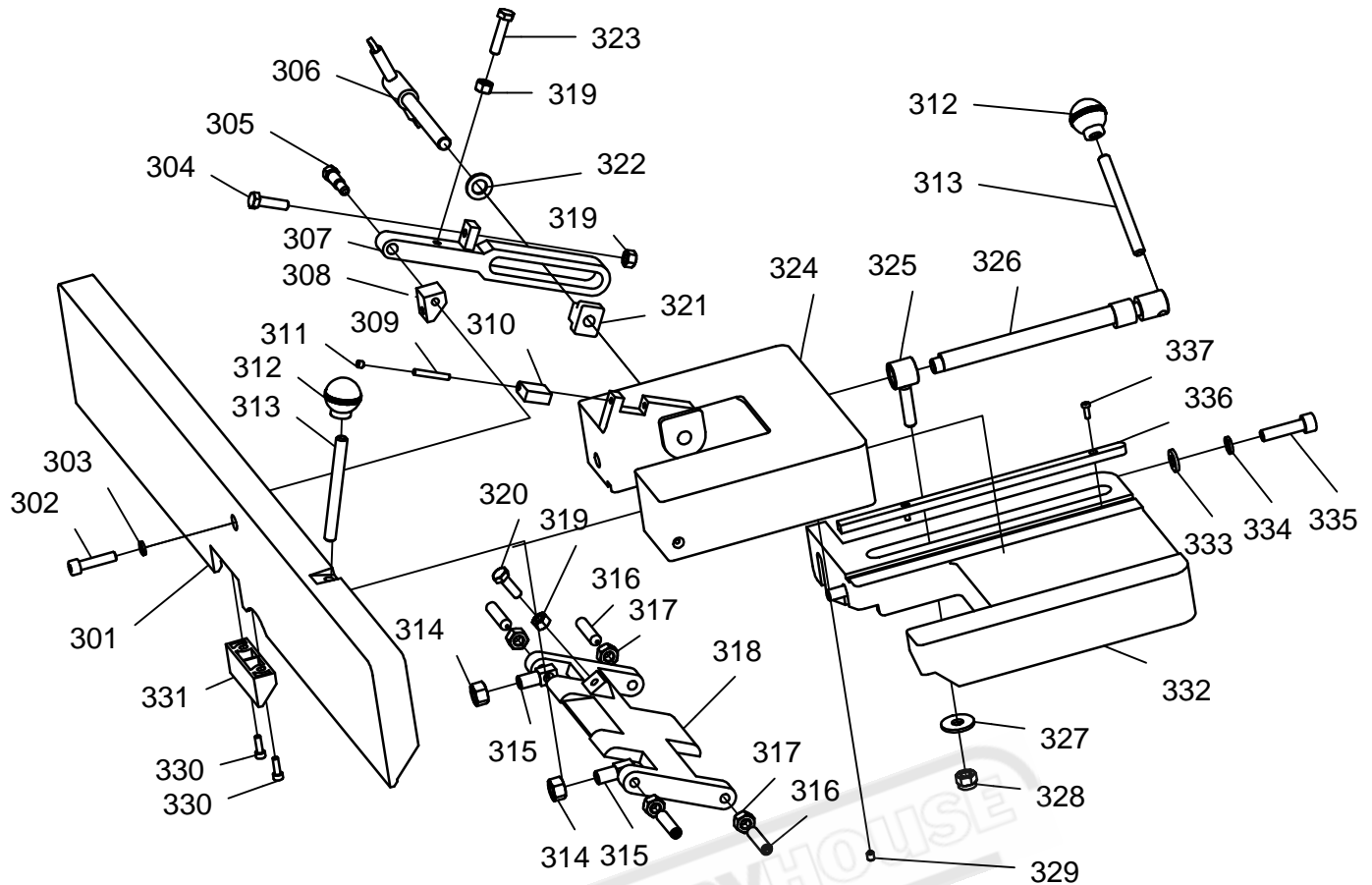
PART	DESCRIPTION	QTY	PART	DESCRIPTION	QTY
1	INFEED TABLE	1	22	FLAT WASHER $\phi 6$	2
2	FENDER WASHER $\phi 5$	2	23	CAP SCREW M6*12	2
3	POINTER	1	25	HANDLE	2
4	SPECIAL WASHER	1	26	SET SCREW M6*8	4
5	1/8 PLATE	1	27	FLAT WASHER $\phi 8$	8
6	PH HEAD SCREW M5*16	1	28	LOCK WASHER $\phi 8$	8
7	LOCK SCREW	1	29	CAP SCREW M8*25	8
8	RABBET ARM	1	30	BASE	1
9	SET SCREW M8*20	1	31	OUTFEED TABLE	1
10	FLAT WASHER $\phi 10$	2	32	KNOB M6*30	2
11	LOCK WASHER $\phi 10$	2	33	SET SCREW M8*25	7
12	SCREW M10*35	2	34	NUT M8	8
13	SCALE	1	35	GIB	2
14	PIN $\phi 4*20$	1	36	CAP SCREW M8*20	2
15	RIVET 2*6	2	37	BLOCK	1
16	TABLE ADJUST NUT	2	38	RUBBER WASHER	1
17	HAND WHEEL SHAFT	2	39	CUTTERHEAD GUARD	1
18	KEY 5*20	2	40	RING $\phi 12$	1
19	BRACKET	2	41	GUARD PIVOT SHAFT	1
20	RING	2	42	SPRING	1
21	HANDWHEEL	2	43	ROLL PIN 6*40	2

## Cutterhead



PART	DESCRIPCION	QTY
201	CUTER HEAD	1
202	KNIFE	4
203	FLAT CAP SCREW M5*12	8
204	GIB	4
205	GIB BOLT M6*10	16
206	BEARING BLOCK	2
207	STUD	2
208	LOCK WASHER 10	2
209	HEX NUT M10	2
210	BALL BEARING 6204	2
211	HEX BOLT M8*20	1
212	FLAT WASHER $\Phi 8 \times 28$	1
213	CUTTERHEAD PULLEY	1
214	COLLAR	1
215	KEY 6*25	1
216	EXT RET RING 10	2
217	KNIFE GAUGE BAR	2
218	KNIFE GAUGE SHAFT	1
219	SET SCREW M6*8	1

# FENCE



PART	DESCRIPTION	QTY	PART	DESCRIPTION	QTY
301	FENCE	1	320	HEX BOLT M8x25	1
302	CAP SCREW M8*35	1	321	LOCK NUT	1
303	LOCK WASHER 8	1	322	WASHER 12	1
304	HEX BOLT M8*30	1	323	HEX BOLT M8*35	1
305	SPECIAL SCREW	1	324	FENCE CARRIAGE	1
306	TILT LOCK SHAFT	1	325	ADJUST LEVER	1
307	CLAMP ARM	1	326	ENCENTRIC LOCK LEVER	1
308	BRACKET BLOCK	1	327	BIG WASHER 10	1
309	DOWEL PIN 5*35	1	328	LOCK HEX NUT M10	1
310	90 DEG STOP BLOCK	1	329	SET SCREW M6*8	1
311	SET SCREW M6*6	1	330	CAP SCREW M5*16	2
312	KNOB M10	2	331	FENCE GUIDE BLOCK	1
313	STUD M10	2	332	FENCE SUPPORT	1
314	HEX NUT M12*1	2	333	WASHER 10	2
315	SCREW BLOCK	2	334	LOCK WASHER 10	2
316	SET SCREW M10*45	4	335	CAP SCREW M10*40	2
317	HEX NUT M10	4	336	KEY 10*274	1
318	BRACKET	1	337	PH HE SCREW M4*12	2
319	HEX NUT M8	3			

# Base

PART	DESCRIPTION	QTY	PART	DESCRIPTION	QTY
401	STAND	1	428	RUBBER FOOT M8*16	4
402	DUST PORT	1	431	PH HEAD SCREW M5*10	4
403	HEX NUT M8	12	432	FENDER WASHER 5	4
404	LOCK WASHER 8	8	433	HEX NUT M5	2
405	FLAT WASHER 8	4	434	LOCK WASHER 5	2
406	MOTOR	1	435	FLAT WASHER 5	2
407	KEY 8*40	1	436	SERRATED SPACER 5	2
408	BELT PK1180	1	437	SWITCH BOX	1
409	SET SCREW M6*8	2	438	HEX NUT M4	2
410	MOTOR PULLEY	1	439	STAIN RELIEF M20*1.5	3
411	PH HEAD SCREW M6*10	6	440	BELT COVER	1
412	BACK COVER	1	441	FANGE BOLT M6*12	2
413	CARRIAGE BOLT M8*25	4	442	PH HEAD SCREW M5*12	2
414	FENDER WASHER 8	8	443	PH HEAD SCREW M4*16	2
415	HEX BOLT M8*30	4	444	SWITCH	1
416	MOTOR MOUNT PLATE	2	445	BOLT M10	3
417	POWER CORD	1	446	LOCK WASHER 10	3
418	MOTOR CORD	1	447	FLAT WASHER 10	3

